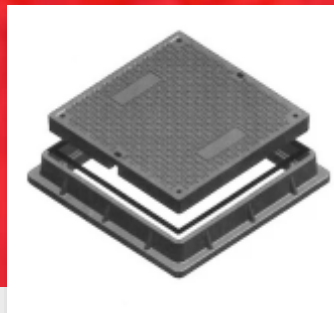




EPP Composites Pvt. Ltd.
Since 1986

Thermoplastics / Fluoropolymer *Injection Moulded Products*



About Us

EPP Composites Pvt. Ltd. Established in 1986 is the pioneer in the development of corrosion free products manufactured with GRP/FRP/GRE—advance materials and today is the leading global player in this exponentially growing market. EPP Composites is one of the worlds top 10 composite manufacturing facilities, as recognised by the Composite World Journal-USA.

EPP, has embraced best technologies to develop products needed for infrastructure and growing industry sectors from Water, Chemical, Electrical, Thermal Power, Refineries, Petrochemicals and so on. Technologies and manufacturing process at EPP Composites, today include Continuous Filament Winding, Helical Filament Winding, Compression Moulding, Sheet Moulding, Pultrusion, Contact Moulding, Vacuum Resin Transfer Moulding (RTM), Hand Moulding and Injection Moulding.



Manufacturing Capabilities

EPP Composites has an expansive product basket of more than a hundred unique products with a high degree of customisation. Our 7 manufacturing complexes spanning over 900,000 square feet of facilities are equipped with, world-class laboratories/testing protocols to ensure quality requirements as per various Indian & International Standards.

EPP Composites' client list includes 5000+ customers from 5 Continents and serves every industry segment with Single Stop Shop & 360-degree solution approach from concept to commission.

In pursuit of becoming World's leading company, we have added Thermoplastic Injection Moulding lines. These lines will support the Industry demand for Industrial & Commercial products like Mould, Pall Rings, Polycarbonate Enclosures, PP Manhole Covers with Frame, Plastics Switch Gear, Trefoil Clamp, Rigid Type Terminals, Screw on Wire Connectors, Cable Glands, Automotive Thermoplastic Components, Polycarbonate Cover, etc. components falling under Engineering Plastics. Currently, 160 Ton & 450 Ton lines are in operation.



*Injection Moulding Machine 460 T
Injection Moulding Machine 160 T*



Platen Size - 1180x1180 mm

Material - PC, ABC, PP, PBT, PE

Tower Packing (PP/PE/PVDF/Nylon)

Flower Pall Ring

Size	Dia.mm x Ht.mm	Surface Area m ² / m ³	Voidage %	Pcs. Per m ³	Packing Factor F
S	51x19	185	88	25,000	36
M	73x27.5	127	89	8,000	18
L	95x37	102	90	3,600	16
LL	145x48	65	95	1,100	04
2K	80x32	92	95	7,000	11
3K	105x56	72	96	1,650	09



Pall Ring

Size	Surface Area m ² / m ³	Voidage %	Pcs. Per m ³	Packing Factor F
16 mm	340	88	2,10,000	95
25 mm	210	89	51,000	52
38 mm	130	90	15,000	32
50 mm	100	92	6,500	25
75 mm	92	93	2,100	20
90 mm	85	90	1,200	16



Saddles Pall Ring

Size	Surface Area m ² / m ³	Voidage %	Pcs. Per m ³	Packing Factor F
25 mm	210	90	56,000	33
38 mm	140	91	12,000	25
50 mm	110	93	6,500	21
75 mm	89	94	1,350	16



Ring Packing

Size	Surface Area m ² / m ³	Voidage %	Pcs. Per m ³	Packing Factor F
#1"	250	92	70000	32
#1 A	140	95	26500	30
#2 A	115	96	7000	18
#3 A	90	96.5	4500	12



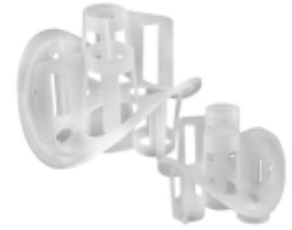
Ball Packing

Size	Surface Area m ² / m ³	Voidage %	Pcs. Per m ³	Packing Factor F
1"	278	90	81000	28
2"	157	93.5	12500	16
3 1/2"	124	95	1600	12



Heilex

Size	Surface Area m ² / m ³	Voidage %	Pcs. Per m ³
50 mm	100	8000	94
76 mm	75.3	3420	96
100 mm	75	1850	95



Pall Ring - 1

Size DxHxT	Surface Area m ² / m ³	Pcs. Per m ³	Voidage %
95x34x1.5	138	4900	97



Pall Ring - 2

Size	Surface Area m ² / m ³	Pcs. Per m ³	Voidage %	Packing Factor F
25 mm	205	51000	86	137
38 mm	130	14500	90	85
50 mm	95	6500	92	57



Electrical Products (PP/PC/ABS/Nylon)

Polyester IP 65/66/67 Enclosure

Our EPP Fiber Reinforced Polyester Enclosures are designed and manufactured for outdoor and indoor industrial applications, also it comes with high mechanical, thermal, weatherproof IP 66 & 67 certified high impact resistant. Enclosures are designed for protecting electrical and electronic controls such as PCBs, Cable Glands, Connectors, Membrane Keypads, Chassis Plates, Terminal Rails, Switches etc. The enclosures are available in range of sizes, styles, and manufactured with different materials to suit wide range of applications.



Material	Glass Fiber Reinforced Polyester
Ingress Protection (EN 60529)	IP65 / IP66 / IP67
Impact Resistance (EN 50014)	7 Joule
Temperature Range of seal CR (Chloroprene rubber)	-40°C to +100°C
Flammability	Self Extinguishing, UI-94 V0
Protective Insulation	Fully insulated to VDE 0100
Dielectric Strength	> 10 Kv/mm
Toxicity	Halogen Free
Surface Resistance	
Colour	Silver Grey RAL 7001 / Black RAL 9011 / Light Grey RAL 7035

Enclosure Standard Range			
Sr.No.	L	W	H
1	55	55	37
2	55	55	59
3	80	75	75
4	110	75	56
5	122	120	90
6	220	120	90
7	160	160	90
8	260	160	90
9	255	250	120
10	255	250	160
11	400	250	120
12	400	250	160
13	360	360	91
14	405	400	121

Nylon Cable Gland

Item No.	PG Thread	D1	D2	B1	L1	L2	L3	Cable Range	Packing
EG-7	PG-7	12.5	8.3	6.9	7.9	20.0	13.3	3.5~6	50 Pcs.
EG-9	PG-9	15.2	10.5	7.8	7.9	22.0	15.1	4~6	
EG-11	PG-11	18.6	13.2	10.8	7.9	23.7	18.3	5~10	
EG-13.5	PG-13.5	20.4	15.5	12.5	8.9	24.6	18.9	6~12	
EG-16	PG-16	22.5	17.2	15.0	9.8	26.2	19.5	10~14	
EG-21	PG-21	28.3	22.4	18.5	10.8	30.0	23.7	13~18	
EG-29	PG-29	37.0	30.6	25.3	10.8	35.0	27.4	18~25	
EG-36	PG-36	47.0	35.3	36.3	14.5	42.3	30.3	22~32	
EG-42	PG-42	54.0	40.0	40.4	14.5	44.0	31.2	30~38	



Material : PP/PC/ABS/Nylon

Color : Black, available in other colors

Rigid Type Terminals

Type : SHT

Operating Current : 30A and 60A/500 V.AC

Housing : Electrical Grade Polybutylene Terephthalate (PBT)

H.V. Capacity : 2.5Kv for 1min.

Conductors : Brass, Coated with Bright Nickel

Screws : Mild Steel Coated with Zinc Passivation/
Brass Coated with Bright Nickel / SS 304

Ways : 2,3,4,5,6,8,12 Ways

Colours : Black, Red, Yellow & Blue

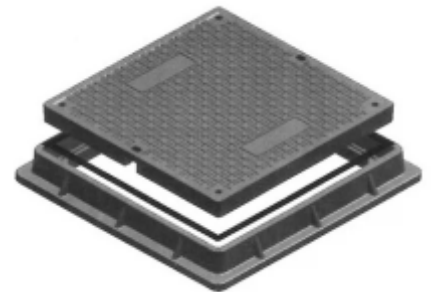


PP/PVC Manhole Cover

Our products are fabricated with high grade polymer and additives to optimize maximum durability and excellent lifespan. This product is suitable for Luxury Row Houses, Villas, Resorts, Highrise Buildings, Under Ground Parking.

Engineering Polymer Manhole Cover in Deferent Sizes

Item No.	Size in Inch	Size in mm
1	12 x 12	300 x 300 mm
2	18 x 18	450 x 450 mm
3	18 x 24	450 x 600 mm
4	24 x 24	600 x 600 mm
5	27 x 27	686 x 686 mm



Composite Products



FRP Tanks & Vessels



FRP / GRP Pipes



FRP Cable Trays



Pultruded Profiles



FRP Ladders



Electrical Enclosures



FRP Scrubbers



FRP Lighting Poles



FRP Manhole Covers

EPP COMPOSITES PVT. LTD.

REGISTERED OFFICE

Plot No. 2646, Kranti Gate Main Road, Lodhika
Industrial Estate, Kalawad Road, GIDC Metoda,
Rajkot - 360 021, Gujarat, INDIA.

Ph. : +91 02827 287059-60-61

Fax : +91 02827 287063

E-mail : businessdevelopment@epp.co.in

Website : www.eppcomposites.com