



Innovative Engineering,
Renovating Life



EPP Composites Pvt. Ltd.

Registered office :
Plot No. 2646, Kranti Gate Main Road,
GIDC Lodhika Industrial Estate, Kalawad Road,
Metoda, Rajkot - 360 021, Gujarat, INDIA.
Ph. : +91 2827 287059-60-61,
Fax : +91 2827 287063.
E-mail : marketing@epp.co.in, info@epp.co.in
Website : www.epp.co.in

Plant - 2 : Chemical Plants & Equipment Division
Plot No. 1934/5, Road No. 07-B,
Off Almighty Gate Main Road, GIDC
Lodhika Industrial Estate, Kalawad Road,
Metoda, Rajkot - 360 021, Gujarat, INDIA.
E-mail : marketing@epp.co.in,
info@epp.co.in

Plant - 4 : Pultrusion Division / SMC Division
Plot No. : 2221, Kranti Gate Main Road,
GIDC Lodhika Industrial Estate,
Kalawad Road, Metoda,
Rajkot - 360 021, Gujarat, INDIA.
E-mail : marketing@epp.co.in,
info@epp.co.in

Marketing Office : A-801, Iscon Elegance, S.G. Highway, Near Prahladnagar Cross Road,
Ahmedabad - 380 055, Gujarat, INDIA. Mo. : +91 90990 72566, Ph. : +91 79 4006 0239,
E-mail : pvvinod@epp.co.in, marketing@epp.co.in, info@epp.co.in

Plant - 1 : GRP Piping Division
Plot No. 2646, Kranti Gate Main Road,
GIDC Lodhika Industrial Estate,
Kalawad Road, Metoda,
Rajkot - 360 021, Gujarat, INDIA.
Ph. : +91 2827 287059-60-61,
Fax : +91 2827 287063.
E-mail : marketing@epp.co.in,
info@epp.co.in

Plant - 3 : Building Products Division
Atika Rubber Mills Compound,
Atika Industrial Area, Road No. 1, Dhebar Road
(South), Rajkot - 360 002, Gujarat, INDIA.
Ph. : +91 281 2361623-2373461,
Fax : +91 281 2361531.
E-mail : marketing@epp.co.in,
info@epp.co.in

Plant - 5 : CFW Division.
Near Lafarg concret plate, Beside Ilzzat papad
Haripar pal, Rajkot, Gujarat, INDIA.
Ph. : +91 2827-281059-60-61,
Fax : +91 2827-287063.
E-mail : marketing@epp.co.in,
info@epp.co.in

2011-12-EPP-SMC-01.3K / Spotlight-079-30022324



Enhance the efficiency of electrical equipment



SMC Enclosures for Electrical Sector

EPP Composites Pvt. Ltd.

SMC Junction Box, Meter Box & Service Connection Box

EPP Composites Pvt. Ltd. is one of the leading global players in the rapidly growing composite industry. The company has achieved a reputed position with more than twenty five years of focus on quality and customer service. Since 1986, Research & Development of new product remains a primary aim at EPP which has today resulted into multidivisional activities.

In tune with the technology EPP presents a wide range of SMC (Sheet Molding Compound) boxes for various applications meeting the requirements of IS:13410 and IS:14772, to replace the conventional metallic boxes which conduct electricity and are prone to current leakages resulting in electrocution, deaths and accidents. Each SMC box is designed to deal various power problems resulting in improved efficiency of your electrical equipment.

SMC Box Features :

- 100% shock proof
- 100% rust proof
- Light weight & yet strong
- Does not melt at high temperature
- Rot proof and termite proof
- Type tested at CIPET & CPRI
- One piece molded without joints
- Excellent for both outdoor and indoor Usage.
- Good aesthetic look, ideal for public place.
- Maintenance free.
- No painting required.
- Zero resale value, hence no theft
- Long life expectancy
- Fully meets the requirements of IS : 13410 and IS : 14772

SMC JUNCTION BOXES/POLE MOUNTED STREET LIGHT BOXES

Sr. No	Company Product Code	Inside Dimension (mm)
1	EPP JB 140140	140 X 140 X 95
2	EPP JB 200140	200 X 140 X 95
3	EPP JB 240130	240 X 130 X 110
4	EPP JB 250200	250 X 200 X 105
5	EPP JB 300200	300 X 200 X 105
6	EPP JB 140140 (TH)	140 X 140 X 100
7	EPP JB 275135(TH)	275 X 135 X 110



SMC SINGLE PHASE METER BOXES

Sr. No	Company Product Code	Inside Dimension (mm)
1	EPP SMB 250200	250 X 200 X 105
2	EPP SMB 250220	250 X 220 X 130
3	EPP SMB 250250	250 X 250 X 155
4	EPP SMB 390200	390 X 200 X 115
5	EPP SMB 440220 (DD)	440 X 220 X 155

SMC THREE PHASE METER BOXES

Sr. No	Company Product Code	Inside Dimension (mm)
1	EPP TMB 350270	350 X 270 X 200
2	EPP TMB 400300	400 X 300 X 210
3	EPP TMB 450375	450 X 375 X 200
4	EPP TMB 510250 (DD)	510 X 250 X 155
5	EPP TMB 505350	505 X 350 X 250



SMC LT CT / DTC / AMR BOXES.

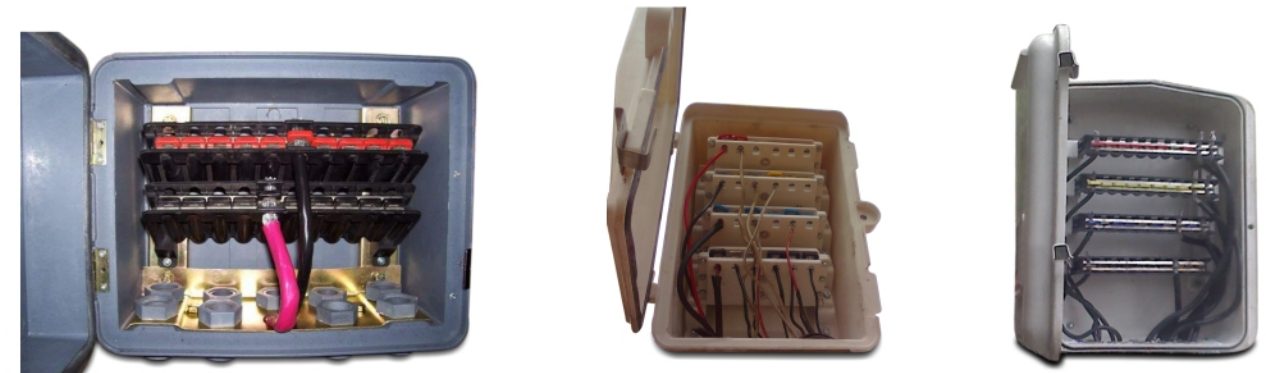
Sr. No	Company Product Code	Inside Dimension (mm)
1	EPP DTC MB 810350	810 X 350 X 230
2	EPP DTC MB 900350	900 X 350 X 250
3	EPP DB 900450	900 X 450 X 250
4	EPP AMR 1000350	1000 X 350 X 250



SMC SERVICE CONNECTION BOXES (SPRING LOADED BUSBAR WITH SMC/NYLON CASING AND STAND)

Sr. No	Company Product Code	Inside Dimension (mm)	Remarks
1	EPP SDB 250250	250 X 250 X 155	Single Phase 1 incoming & 9 Out going
2	EPP SDB 300200	300 X 200 X 150	Single Phase 1 incoming & 20 Out going
3	EPP TDB 350270	350 X 270 X 200	Three Phase 1 incoming & 5 Out going
4	EPP TDB 400300	400 X 300 X 210	Three Phase 1 incoming & 9 Out going

Note: Also available with Bus bar and screw bolt/flynut.



SMC METER BOARD / BPL KIT

Sr. No	Company Product Code	Inside Dimension (mm)
1	EPP BK 250150	250 X 150
2	EPP BK 300250	300 X 250
3	EPP BK 400300	400 x 300
4	EPP BK 400400	400 x 400
5	EPP BK 450300	450 X 300



Customisation

Along with the standard products EPP offers customization as per the specifications of customer. Enquires for Fuse Boxes, Pillar Boxes, SMC chequered Plates and SMC Sheets also solicited.

Note : "The specification and sizes are only indicative and for reference and in good faith and without warranty".